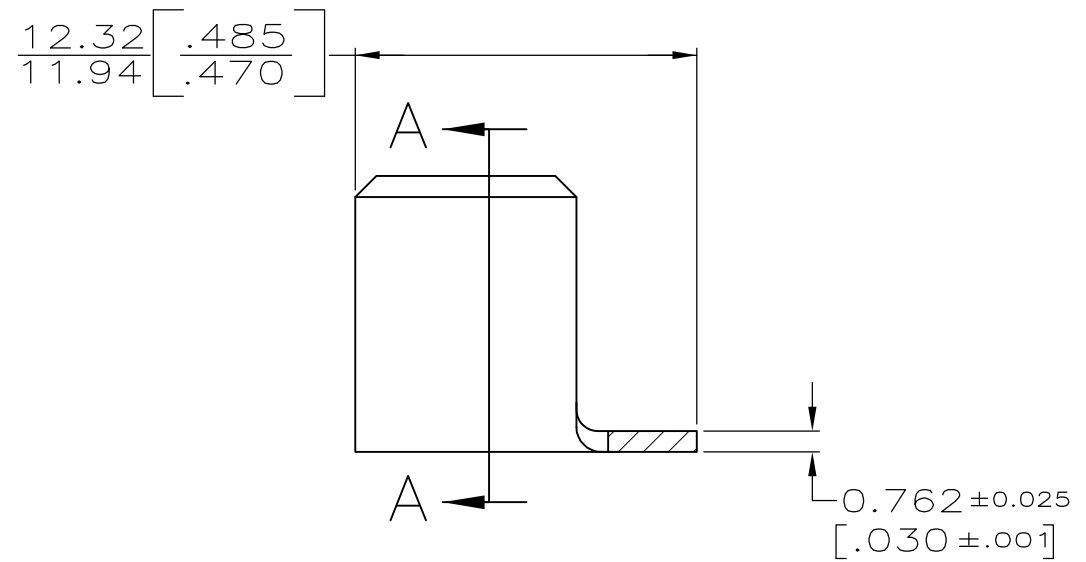
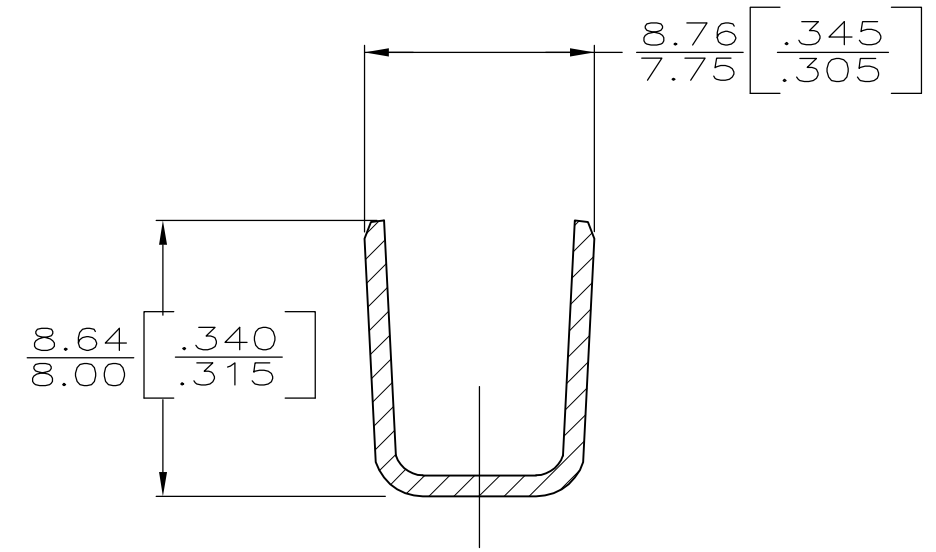
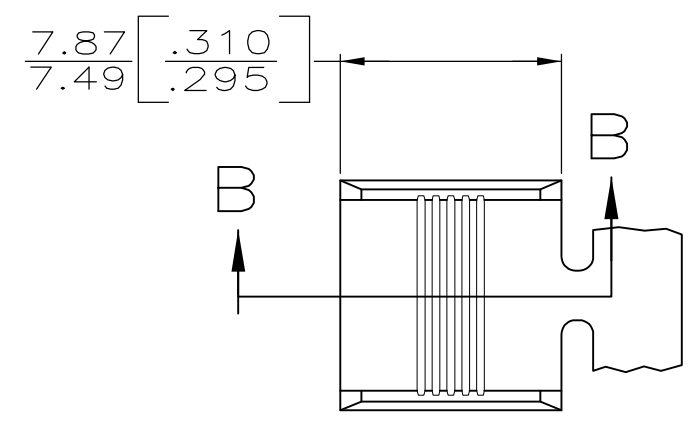
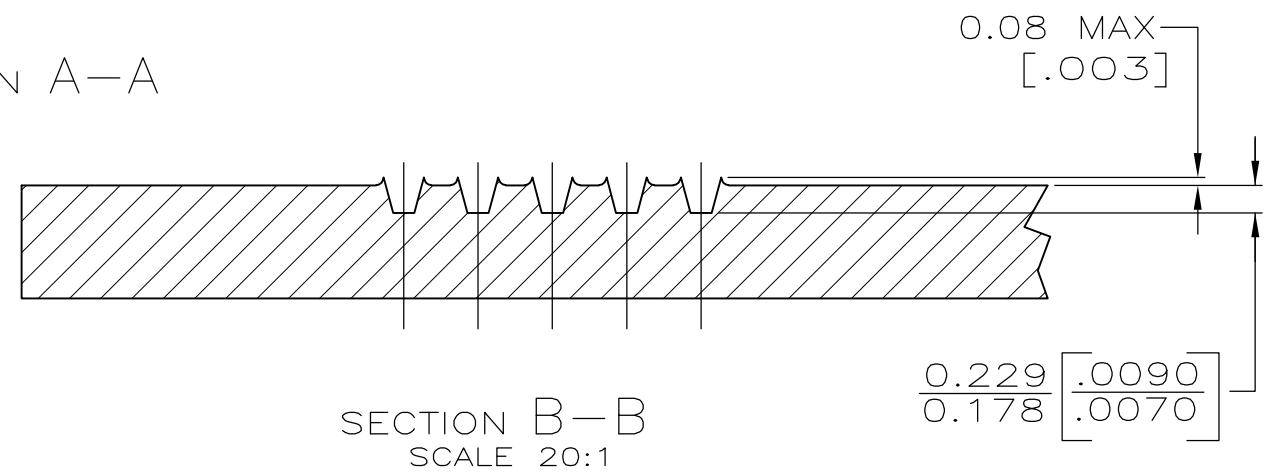


LOC	DIST	REVISIONS					
AF	50	P	LTR	DESCRIPTION	DATE	DWN	APVD
			F1	REVISED PER ECR-07-029650	11DEC07	HMR	GP



SECTION A-A



SECTION B-B
SCALE 20:1

- 1 PRODUCT PROVIDED IN STRIP FORM ON REELS; BREAKS MAY BE PRESENT.
- 2 CRIMP WIDTH: .300, F TYPE (AMPLIVAR THRU)
 CRIMP HEIGHT ±.002 = (TOTAL CMA + 44,500) / 510,200
 GENERAL APPLICATION GUIDELINES MUST BE FOLLOWED AS SPECIFIED IN CATALOG #82221
 FOR APPLICATOR INFORMATION CALL: 1-800-722-1111
 FOR PRODUCT INFORMATION CALL: 1-800-522-6752

10,400 TO 22,900 CMA	63562-1
2 WIRE RANGE	PART NO

THIS DRAWING IS A CONTROLLED DOCUMENT.		DWN D.K. SCHRUM 11/30/89	Tyco Electronics Tyco Electronics Corporation Harrisburg, PA 17105-3608	
DIMENSIONS: mm [INCHES]		CHK M.S. FEHER 12/6/89	NAME SPLICE, AMPLIVAR 5 SERRATION	
TOLERANCES UNLESS OTHERWISE SPECIFIED:		APVD D. SCHWENK 12/8/89	PRODUCT SPEC	
0 PLC ± -		APPLICATION SPEC		
1 PLC ± -		WEIGHT -		
2 PLC ± -		SIZE A3 CAGE CODE 00779 DRAWING NO C-63562		
3 PLC ± 0.25 [.010]		RESTRICTED TO -		
4 PLC ± -		CUSTOMER DRAWING		
ANGLES ± -		SCALE 4:1 SHEET 1 OF 1 REV F1		
MATERIAL #1 HARD BRASS	FINISH 0.002032 [.000080] MIN TIN PL THK			